



DD Nature Zr

自然锆饰面瓷粉 | Ceramic Bonding

使用说明 | *Instructions for use*



完美品质, 触手可及 | Quality, available for *everyone*

快速安全, 追求卓越

DD Nature Zr氧化锆饰面瓷粉可以完美实现我们对美白、美学修复的要求。

我们致力于制作与自然牙齿几乎相同的修复体。

自然锆饰面瓷粉可以让我们轻松实现自然生动的颜色过渡。堆瓷程序适用于实验室的常规操作。

作为一个饰面瓷粉的专家和行业内领先的氧化锆生产商,我们确保氧化锆材料和瓷粉之间完美匹配,为您的实际工作提供强大的基础。

If you expect more than **standard**, but want a fast and **secure** way to reach your goal.

We live up to our own demands for brilliant, aesthetic dental prostheses with the innovative **DD Nature Zr** porcelain veneers.

The name is a commitment – almost identical to the natural model.

The concept allows you to achieve lively, reliable colour renditions with the least effort. A veneer system that adapts to your laboratory routine and not vice-versa.

As a ceramic specialist and one of the leading zirconia producers, we ensure that all processes are coordinated with each other, from the raw material to the finished milling blank and ceramic powder. We provide you with the basis for strong, flawless bonding practically ex works.



高质量产自同一源头 | Quality from one source

DD BioZ

氧化锆材料
zirconia blanks



DD BioZ color classic

氧化锆染色剂
colouring liquids



DD Nature Zr

自然锆饰面瓷粉
ceramic bonding



DDNatureZr

饰面瓷粉的分类 Ceramic assortment



● 牙本色 | *Dentine*
16种牙本色: A1- D4
16 Dentine: A1- D4



● 自然釉质瓷 | *Enamel*
4种釉粉: E1-E4
4 Enamel: E1-E4



● 牙龈色 | *Gum*
2种牙龈色 / 2 Gum
浅色/深色
gum light / gum dark



● 透明效果色 | *Transpa & Effect*
3种透明色 / 3 Transpa
中性/透明/乳白色
T-neutral/ T-clear/T-opal
3种透明效果色 /
3 Transpa effects
效果灰色 / 效果浅灰色 /
效果浅琥珀色
*ET- grey / ET- grey light /
ET- amber light*
透明乳白色 / 2 Transpa Opal
琥珀色/冰蓝色
OE amber / OE ice blue



● 校正粉 | *Correction*



● 着色剂 | *Stain*
13种着色剂
13 Stains



● 釉 | *Glaze*
1种釉 / Glaze



模型液
Modelling liquid



釉液
Glaze liquid

DD Nature Zr

DD自然锆饰面瓷粉是一种饰面瓷，在外观和技术层面上均能完全匹配氧化锆修复体(Y-TZP)。TEC优化并能实现与氧化锆之间的连接效果(TEC $10.5 \cdot 10^{-6} K^{-1}$)。

DD Nature Zr is a veneering ceramic that is optically and technically perfectly attuned to zirconia frameworks (Y-TZP). TEC has been optimised for very strong bonding with zirconia (TEC $10.5 \cdot 10^{-6} K^{-1}$).

物理性质 | *Physical properties*

性质 <i>Properties</i>	测量单位 <i>Measure</i>	值 <i>Value</i>	基准 <i>Norm</i>
热膨胀系数 (25-500°) <i>Coefficient of Thermal Expansion (25-500°)</i>	$10^{-6} K^{-1}$	9.5	
玻璃化转变温度 <i>Glass Transition Temperature</i>	°C	550	
抗弯强度 <i>Flexural Strength</i>	MPa	90	Min. 50

适用性 | *Indications for use*

自然锆饰面瓷粉修饰高强度氧化锆冠体可以取得最优效果。

自然锆饰面瓷粉不适用于修饰金属冠或钛冠。

自然锆饰面瓷粉仅适合牙科使用。

The best results can be achieved when veneering DD Bio Z frameworks.

DD Nature Zr is unsuitable for veneering metal or titanium frameworks

DD Nature Zr is solely intended for dental use.



储存在干燥、避光的环境中
Store in a dry place and protected from light.

高质量产自同一源头 | *Quality from one source*
zirconia, colours, ceramics

内染浸泡 | Colouring frameworks

烧结前 | before sintering

可以用氧化锆染色剂为个性化饰面打造理想的基础。由于染色冠体和饰面瓷的完美契合，边缘瓷或肩台可以省略。

根据氧化锆冠体材料，可选择以下染色剂：

You can create the ideal basis for individual veneering with **DD Bio Z color liquid**. Thanks to the perfect interplay of the coloured framework and veneering ceramic, shoulder ceramics or liners can be dispensed with.

Depending on the zirconium framework material, following Liquids are available:



染色剂 | *Liquid*:
DD Bio ZX² monolith Liquid



氧化锆 | *zirconia*:
高透氧化锆 | DD Bio ZX² translucent

适用 | *application*:

全锆冠
full contours

回切
Cut back

贴面
frames and coppings



2x 切端色 | *Incisal*:
个性化冠体
Individualization of cups



16 x 牙本色 | *dentine shades*:
浸泡
dipping
A1 - D4



染色剂 | *Liquid*:
DD Bio Z color classic



氧化锆 | *zirconia*:
DD Bio Z (3Y TZP-A)

适用 | *application*:

贴面
frames and coppings



16 x 牙本色 | *dentine shades*:
浸泡
dipping
A1 - D4



请注意，每种染色剂的详细的操作说明。
Please note the detailed working instruction for each liquid.

高质量产自同一源头 | *Quality from one source*
zirconia, colours, ceramics

DD Nature Zr

配色表 Combination chart

颜色 Colour	A 1	A 2	A 3	A 3.5	A 4	B 1	B 2	B 3	B 4	C 1	C 2	C 3	C 4	D 2	D 3	D 4
牙本色 Body	A 1	A 2	A 3	A 3.5	A 4	B 1	B 2	B 3	B 4	C 1	C 2	C 3	C 4	D 2	D 3	D 4
釉质瓷 Enamel	E 1	E 1	E 2	E 2	E 4	E 1	E 2	E 2	E 4	E 1	E 3	E 3	E 4	E 1	E 2	E 2

Nature Zr

高质量产自同一源头 | Quality from one source
zirconia, colours, ceramics

烧结温度表

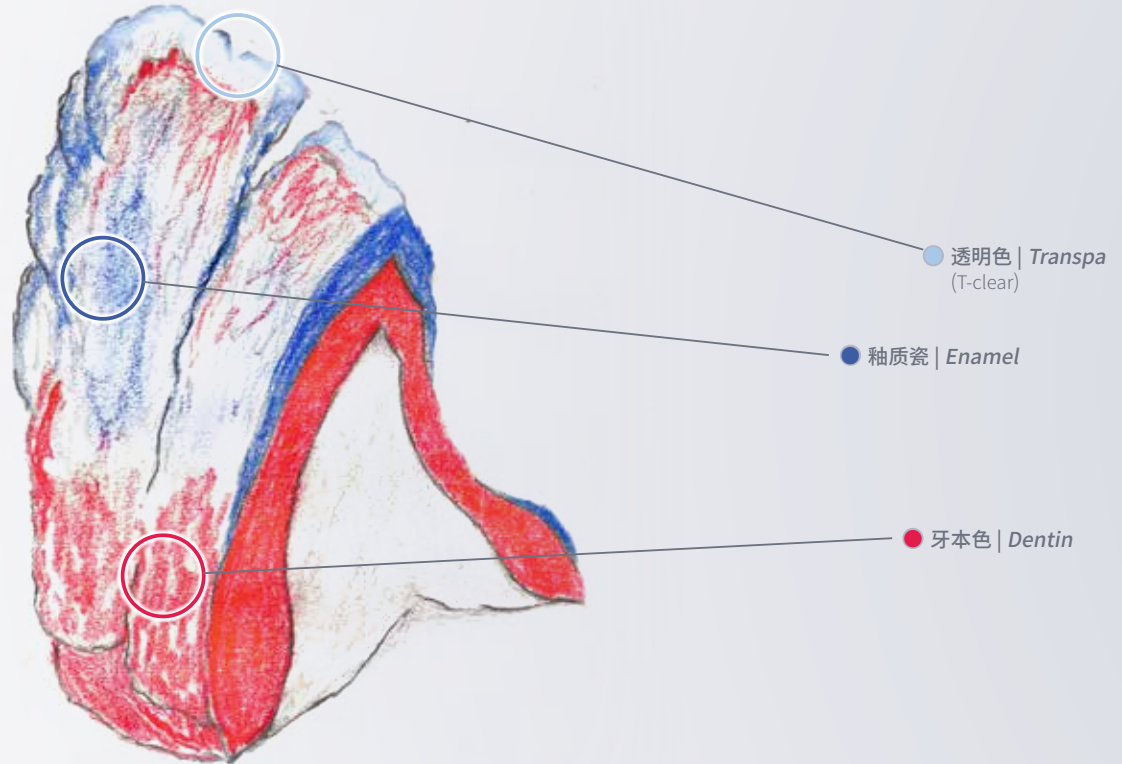
Firing chart

烧结 Firing	开始温度 Start temperature °C	干燥时间 Dry time min.	升温速率 Heat rate °C/min	最终温度 Final temperature °C	保持时间 Hold min	真空 Vacuum	冷却时间 Cooling min.
氧化处理 wash firing	440	2	45	860	1:30	保持 Ein	3
牙体瓷第一次烧结 Main firing	440	4	45	825	1:30	保持 Ein	3
牙体瓷第二次烧结 Correction firing	440	4	45	820	1:30	保持 Ein	3
上釉烧结 Glaze firing	440	2	45	815	1:00	关闭 Aus	3
上釉添加瓷烧结 Glaze firing for full contours	440	2	45	830	1:00	关闭 Aus	3

上述图表中的烧结参数仅供参考，必须要根据不同烧结炉的实际情况不断调整。最好的方法是烧结一个温度测试环与显示温度相比较，从而得出准确的烧结温度。

The firing parameters given above are guidelines, which must always be adjusted to suit the furnace used and the situation of the furnace. What is essential is getting the right firing result. Best way is to fire a test body made of T-clear and compare the transparency of the supplied indicator.

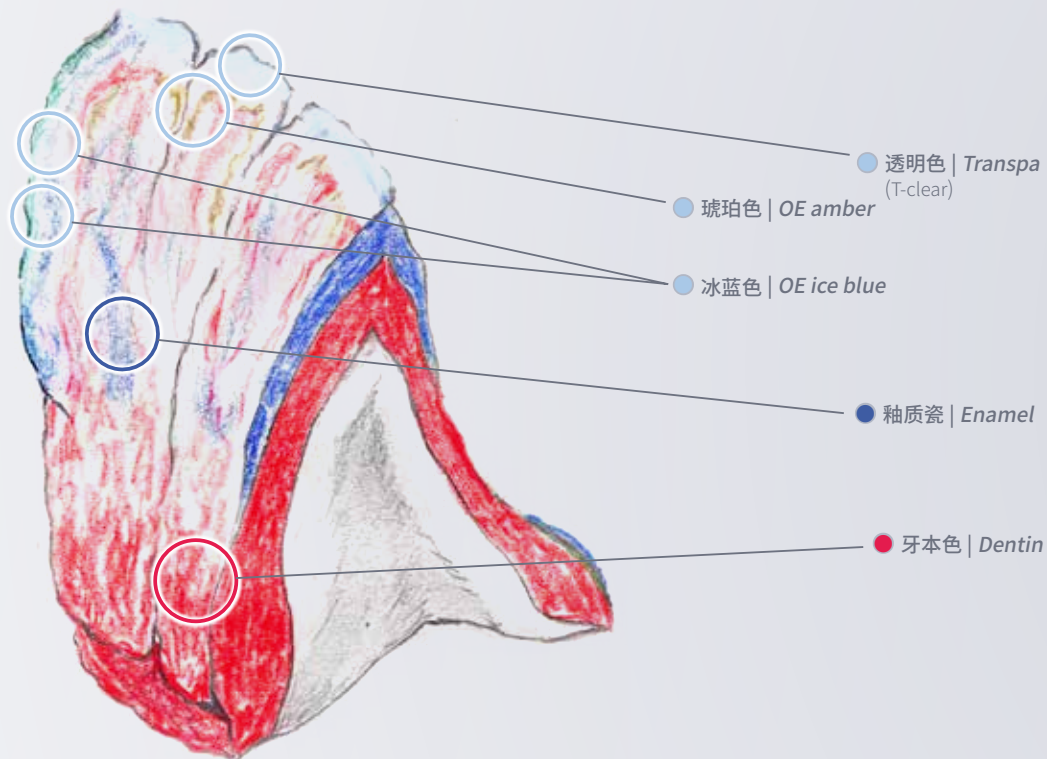
堆筑
(标准)
*Built-up
(Standard)*



高质量产自同一源头 | *Quality from one source*
zirconia, colours, ceramics

高级堆筑
(多层次技术)

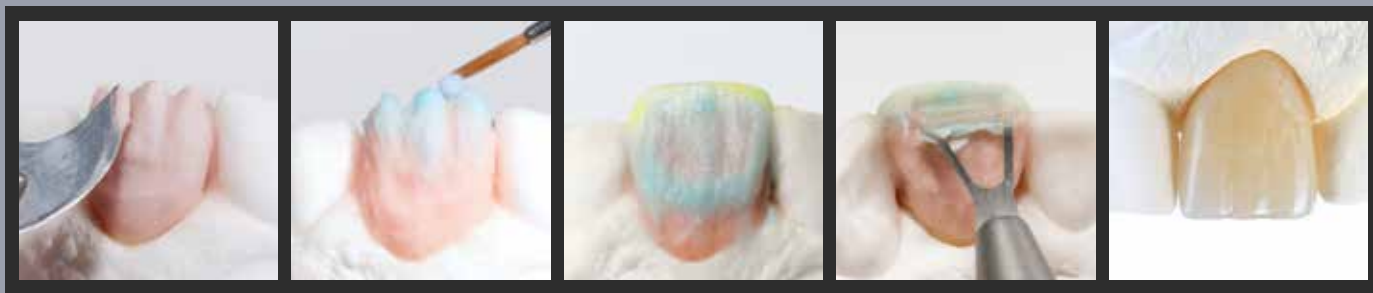
Built-up
(multi layering technique)



高质量产自同一源头 | Quality from one source
zirconia, colours, ceramics

DD Nature Zr

牙体瓷/釉质瓷的应用 *Dentin-/ Enamel build up*



首先按照要求的色调，在咬合面和接触面进行堆瓷。在解剖结构准备好之后，进行回切，为进一步操作预留空间位置。

根据定制的冠体的个性化形态，用釉质瓷和透明瓷或相关效果瓷完成缺失部分。

The labial and occlusal form is first built up with dentine material in the required shade. Once the anatomical form is ready, reduce the incisal and interdental areas of the dentine in order to create enough space for further layering.

Then complete the missing areas with enamel and transparent porcelains or effect transpa / transpa opal porcelains – depending on the individual appearance of the crown required.

Nature Zr

高质量产自同一源头 | *Quality from one source*
zirconia, colours, ceramics

添加瓷/上釉 Correction- / glaze

添加瓷程序目的是优化结构和补充烧结引起的收缩。

上釉程序在准备工作、表面轮廓和最终清洁完成后进行。

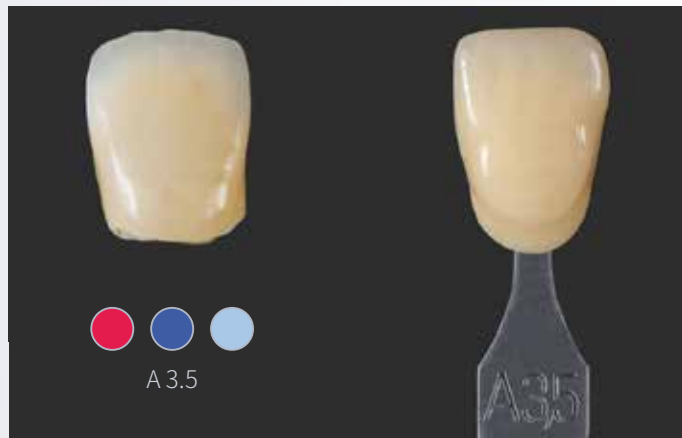
对于所有由高透氧化锆制成的自然锆饰面瓷和全锆修复体来说，DD的粘合剂可以进行完美粘接。

The correction firing serves to optimise the form and supplement the fire shrinkage.

Before layering, the crown must be prepared and cleaned.

The glaze firing occurs after preparation, surface contouring and of course final cleaning.

For DD Nature Zr and full anatomical constructions made of DD Bio Zr translucent the paste paints from Dental Direkt provide the perfect finish.



建议:

因为使用氧化锆染色剂带来的出色的牙体着色效果，经济角度来说单层釉质瓷堆筑也可作为替代选择。

Tip:

Thanks to the perfect dentin body colouring using DD Bio Z color Tclassic liquid, economical single layering (enamel) is also possible as an alternative.

高质量产自同一源头 | *Quality from one source*
zirconia, colours, ceramics



DD氧化锆学院

– 技术与材料的完美结合

在我们的实验室里,可以简单、高效的生产高透氧化锆冠体或自然锆饰面瓷粉的所有种类。

通过我们的**DD技术体系**,可以学习基本的CAD/CAM知识、以及复杂的全瓷种植

体技术。我们培训师的实际工作和日常生活就是处理您的个性化要求和优化工作流程。

The DD Zirconium Academy

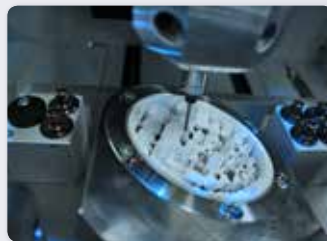
– Perfect combination of technology and material.

In our application laboratory all indications can be manufactured under guidance from the simple and efficient production of a DD Bio ZX² monolith-crown or the entire range of our DD Nature Zr veneering porcelain.

*With our **DD TEC**-systems we impart*

to you the techniques of basic CAD/CAM-knowledge up to the production of complex, full-ceramic implants.

Our trainers work practically and for every-day life. The goal is to deal generally with your individual requirements and optimise working processes.



CE0482



Version 2, April 2013

 **Dental Direkt GmbH**

Industriezentrum 106 - 108
32139 Spenge (Germany)

Tel +49 (0) 5225 - 8 63 19-0
Fax +49 (0) 5225 - 8 63 19-99

info@dentaldirekt.de
www.dentaldirekt.de

ceraMagixTM

Advanced Materials Solutions

大中华区总服务商

无锡赛锐斯医疗器械有限公司 / Ceramagix Hong Kong Ltd.

江苏省 无锡市 锡山经济开发区 芙蓉中三路99号 瑞云5座512室

电话: ++86 (0) 510-6878 0666

传真: ++86 (0) 510-6878 1666

info@ceramagix.com

www.ceramagix.com

官方网站



官方微信

